

Dartmouth Brain Imaging Center (DBIC)

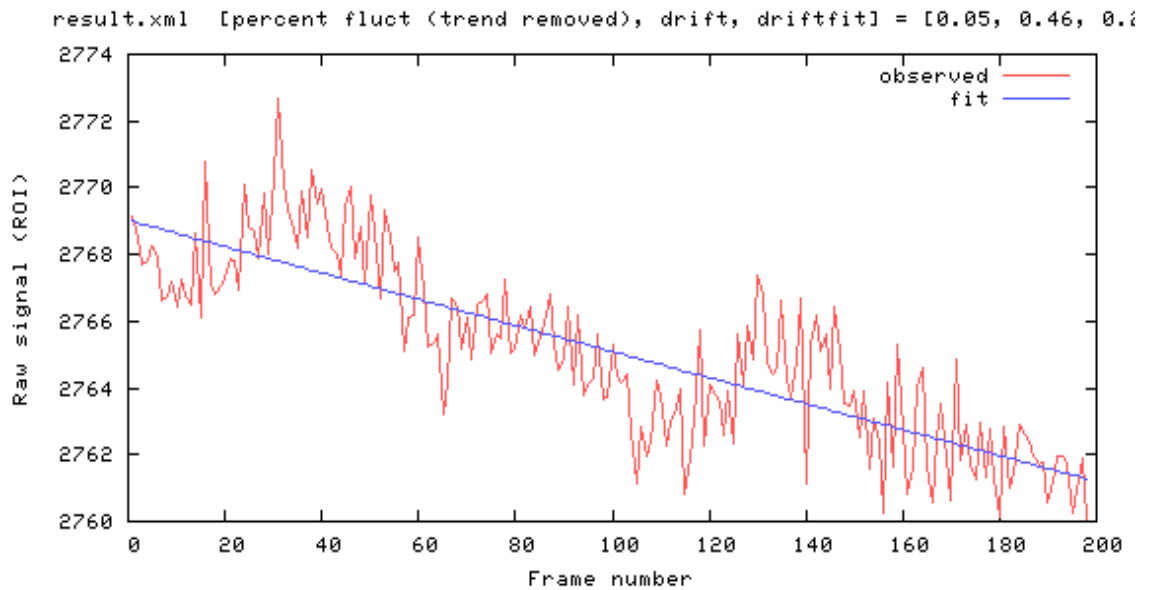
QA Report 64 CH

07222024

Measurements

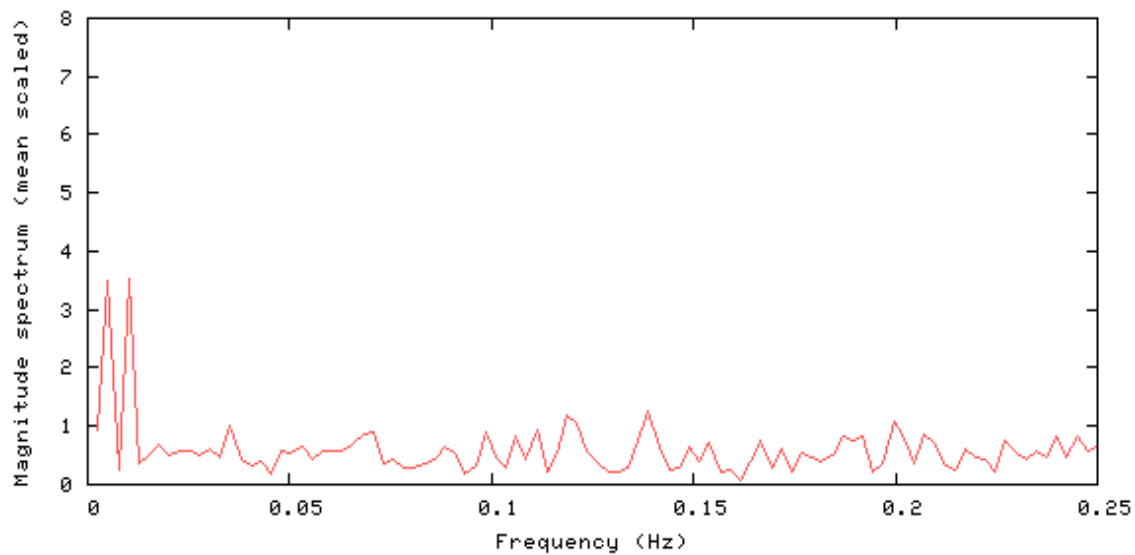
| Measurements | Value |
|------------------------------------|--------|
| mean signal (mean) | 2765.1 |
| Signal to Noise Ratio (SNR) | 182.1 |
| Signal to Fluctuation Ratio (SFNR) | 195.7 |
| Percent Fluctuation | 0.05 |
| Drift | 0.46 |
| Radius of Decorrelation (RDC) | 10.6 |
| Mean Ghost Percentage | 2.071 |
| Standard Deviation (std) | 1.51 |

Signal



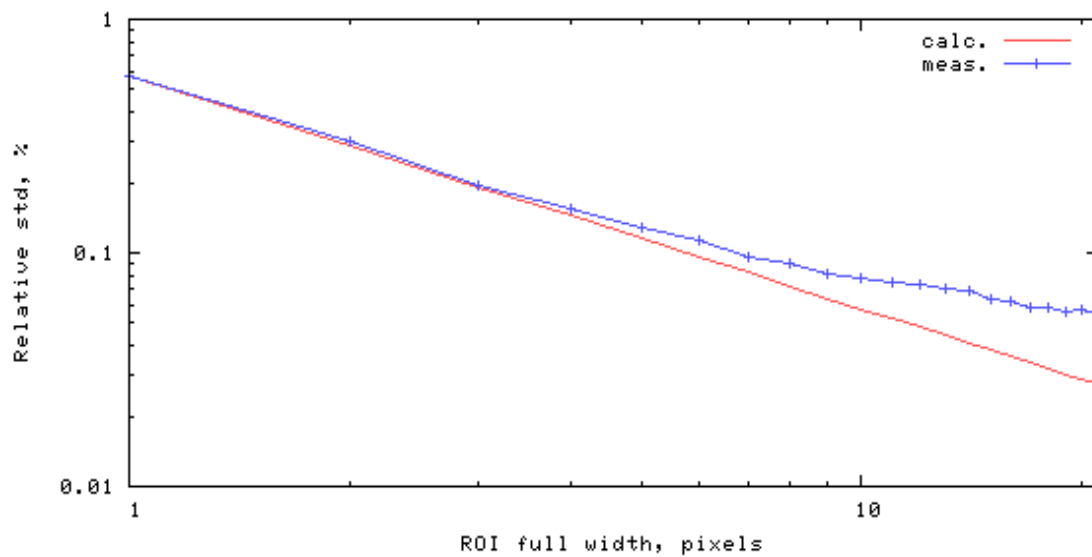
Frequency Spectrum

[mean, SNR, SFNR] = [2765.1 182.1 195.7]



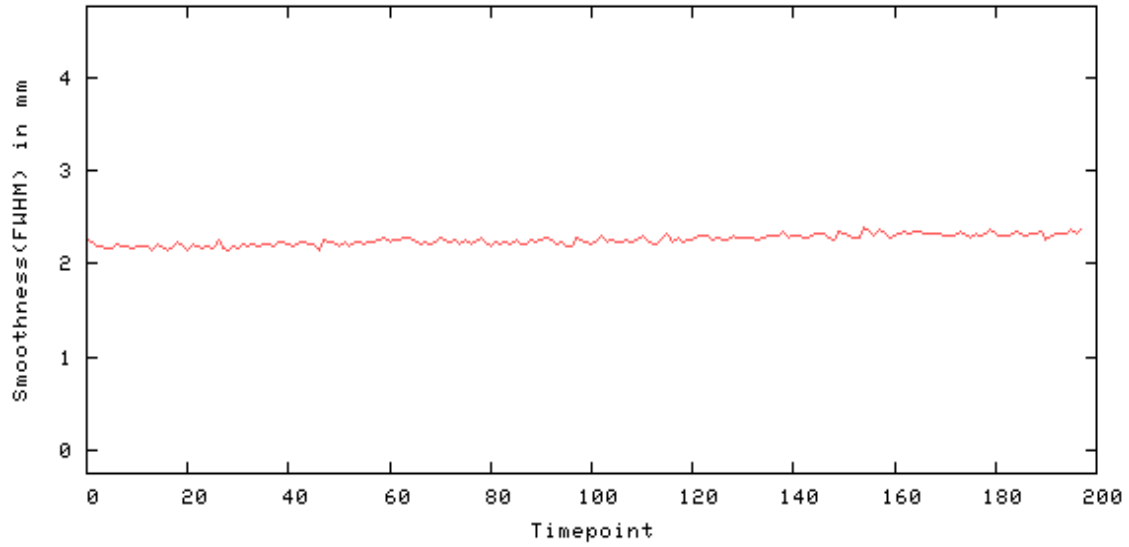
Radius of Decorrelation

rdc = 10.6 pixels



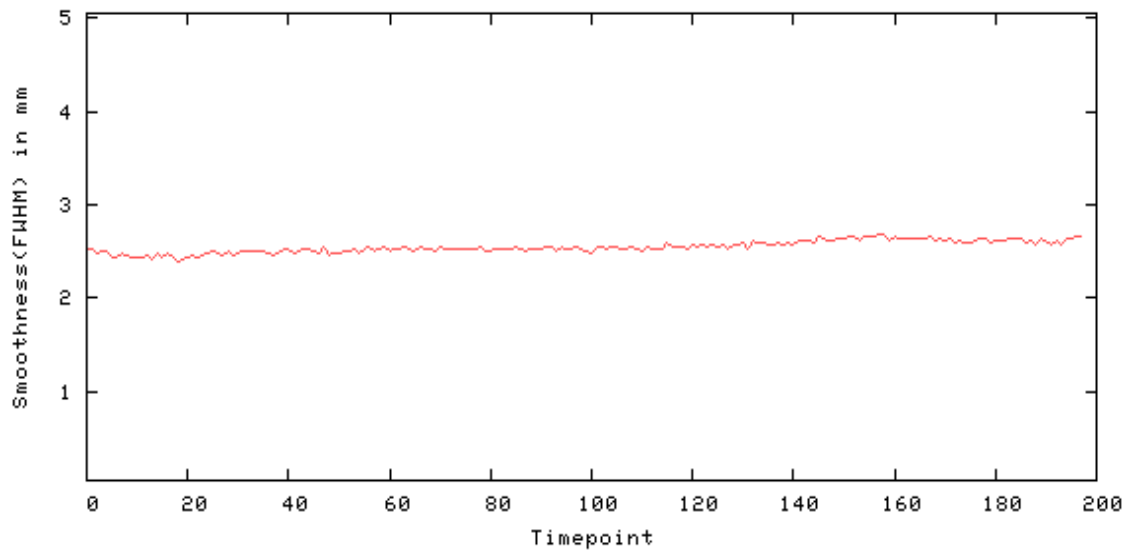
Smoothness - X

Smoothness(FWHM) in mm - X: [min mean max] = [2.140 2.259 2.405]



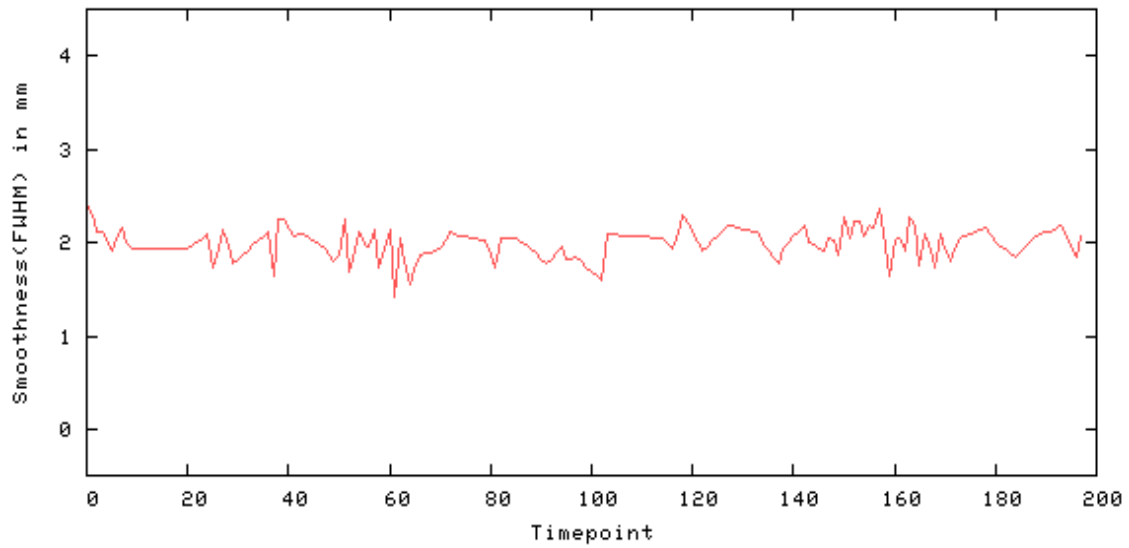
Smoothness - Y

Smoothness(FWHM) in mm - Y: [min mean max] = [2.404 2.551 2.683]



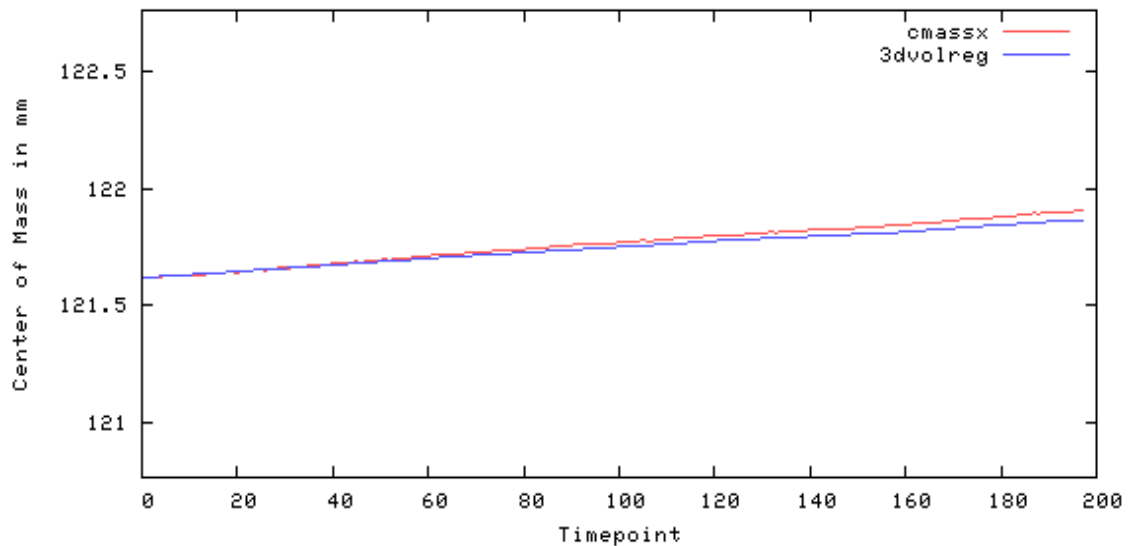
Smoothness - Z

Smoothness(FWHM) in mm - Z: [min mean max] = [1.416 2.004 2.412]



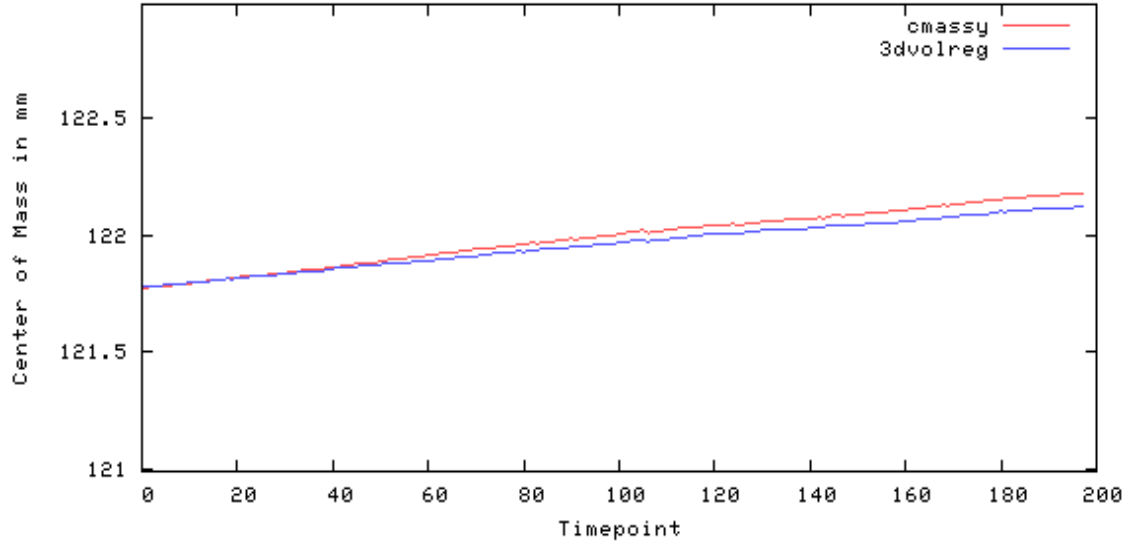
Center of Mass - X

Center of Mass in mm - X: [maxdisplacement drift] = [0.288 0.286]



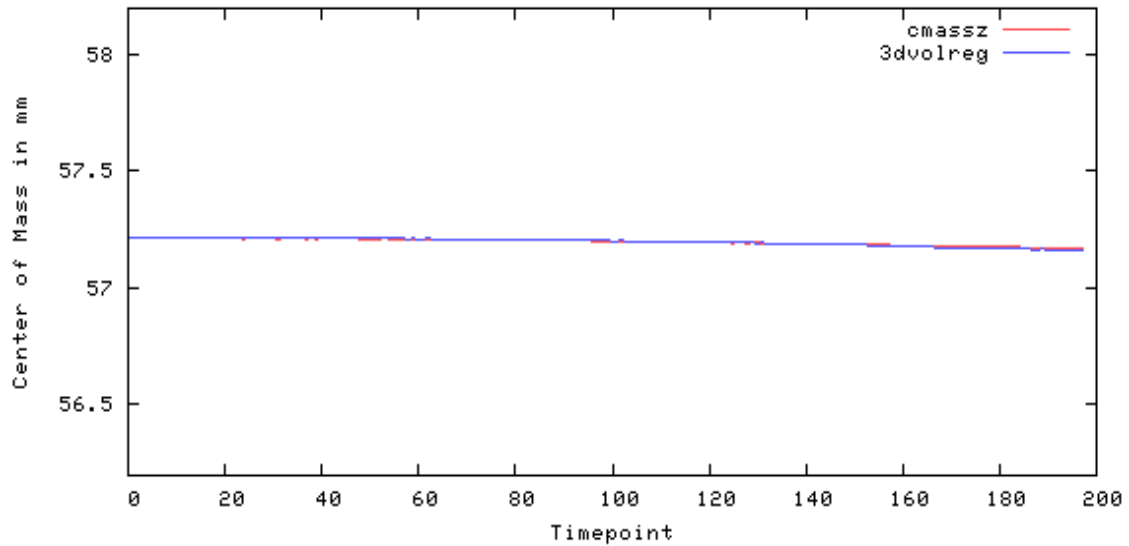
Center of Mass - Y

Center of Mass in mm - Y: [maxdisplacement drift] = [0.407 0.407]

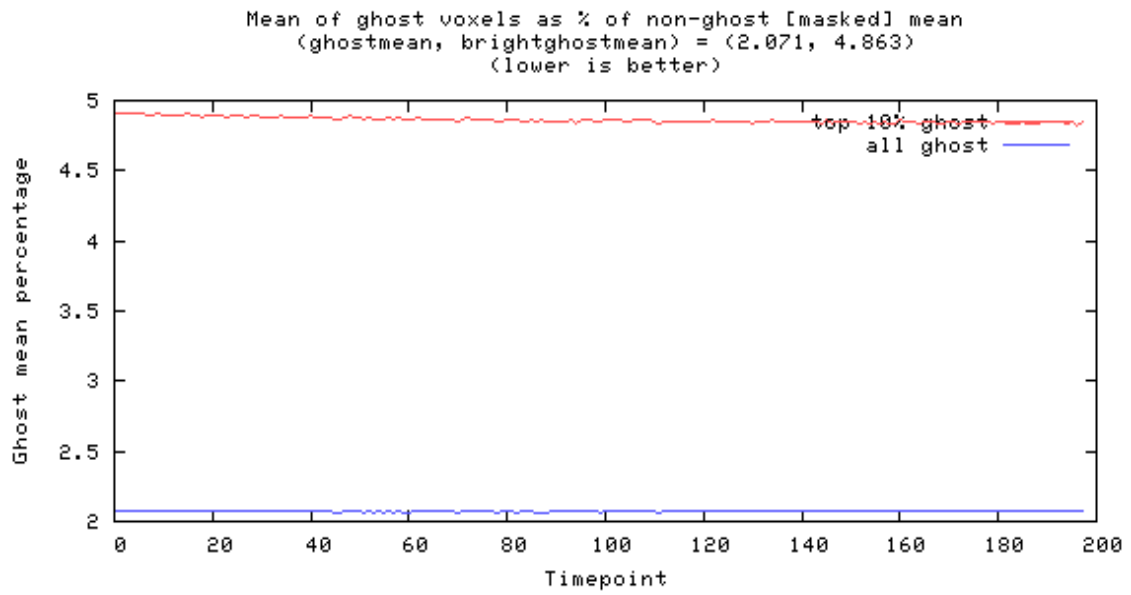


Center of Mass - Z

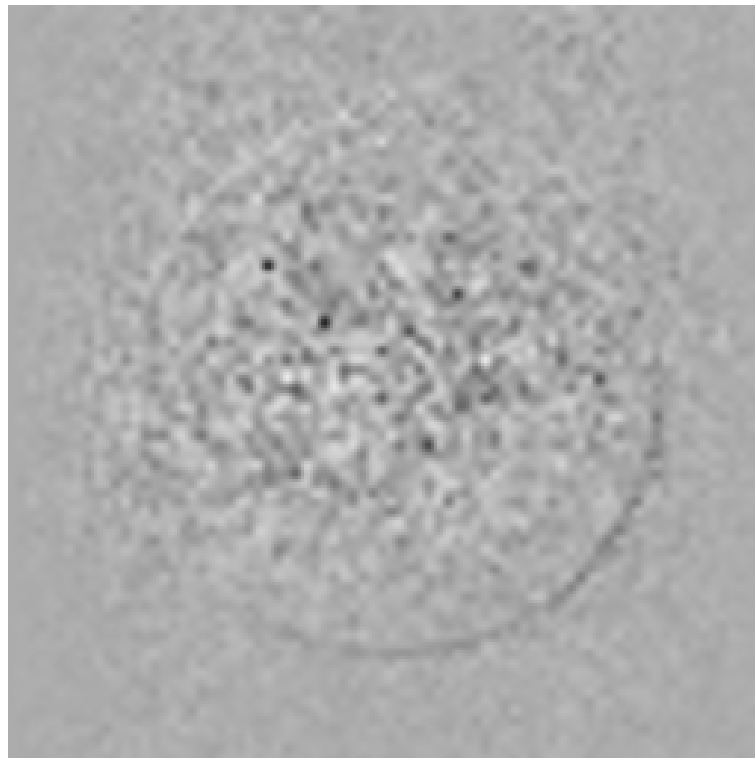
Center of Mass in mm - Z: [maxdisplacement drift] = [0.044 -0.045]



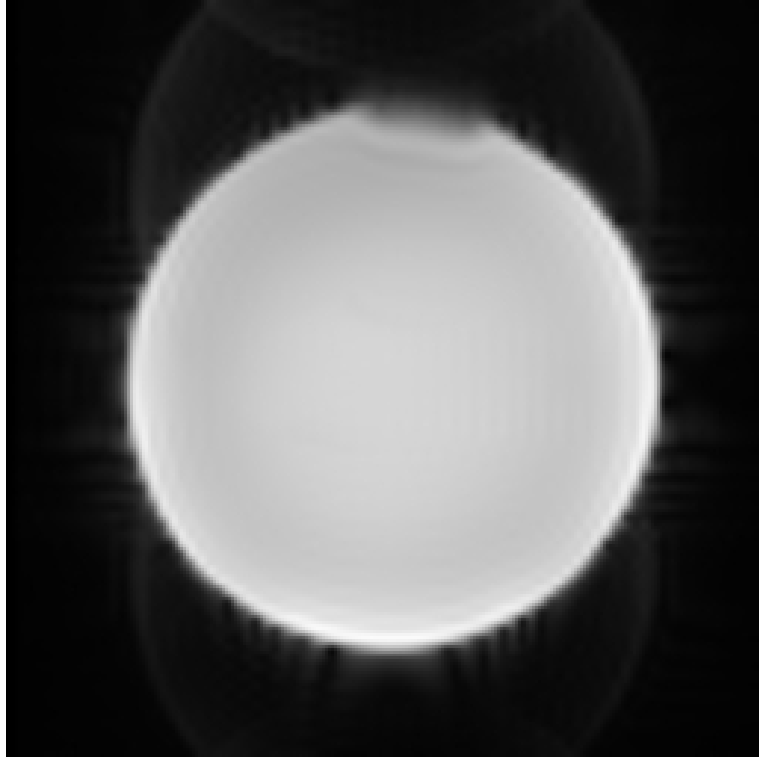
Ghost



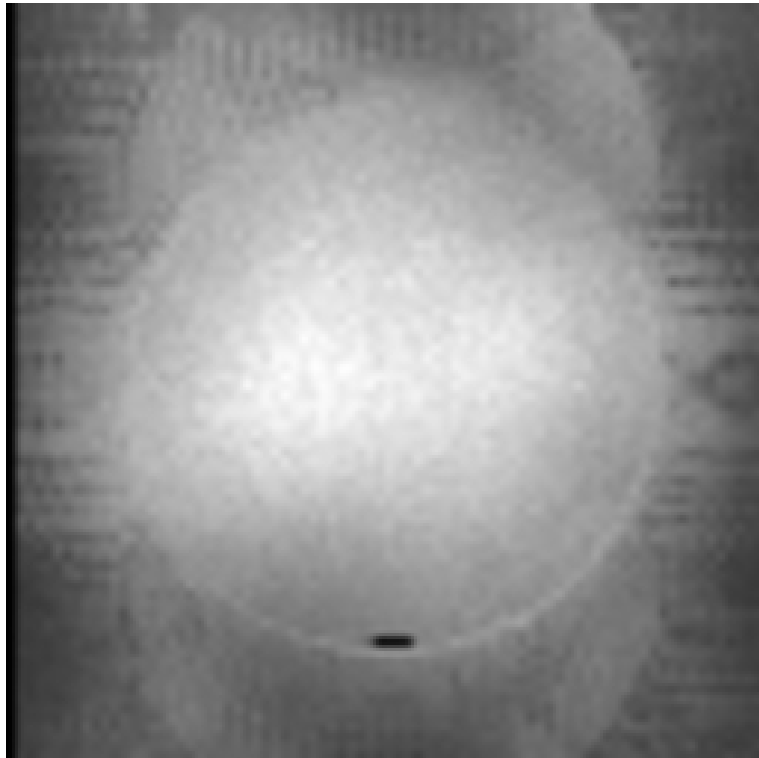
Odd-Even Difference Image



Mean Image



Standard Deviation Image



SFNR Image

